

# Materials & Colours

GIBAM

RT

HF

GIBAM

## Quality and reliability

The high quality of Gibam materials guarantees the durability of its products, even when subject to the intensive use of commercial environments. The respect for regulations, especially those concerning safety and emissions, is guaranteed in all components and materials used to produce Gibam lines, for more sustainability.

## Qualità ed affidabilità

L'alta qualità dei materiali garantisce la durata dei prodotti anche quando sottoposti all'utilizzo intensivo dei locali commerciali. Il rispetto delle norme, specie in termini di sicurezza ed emissioni, è garantito in tutti i componenti e materiali degli arredi Gibam, per un mondo più sostenibile.



## Style and trends

A beautiful object stands out not only for its design, but also for the materials used in it. Gibam offers a fine matching of finishes and colours, with an eye to the styles and trends of international design.

## Stile e tendenze

Un bell'oggetto non si distingue solo per il design, ma anche per i materiali di cui è fatto. Gibam offre curati abbinamenti tra finiture e colori, attenti agli stili e alle tendenze del design internazionale.



## A Epoxy-paints

Verniciature a polveri epossidiche

**G C** **A00** O6Z 13P O3T

**Epoxy-paints - Level 0**  
Verniciatura a polveri epossidiche - Fascia 0

**G C** **A01** O4M OCB O7J 10Q O6P OT9 OP1 OFF 10R OV3 OJM P9

**Epoxy-paints - Level 1**  
Verniciatura a polveri epossidiche - Fascia 1

**G C** **A02** 11U 11V 11W 11Z 11S 11T 13Z 13D 11X 13N 13F 13G 13L 13M

**Epoxy-paints - Level 2**  
Verniciatura a polveri epossidiche - Fascia 2

**G C** **A04** **RAL OPEN**

**Epoxy-paints - Level 3**  
Verniciatura a polveri epossidiche - Fascia 3

## C Polyurethane Paints

Verniciature poliuretaniche

**G C** **C00** O6Z 13P O3T O4M OCB O7J 10Q O6P OT9 OP1 OFF 10R OV3 OJM

**Lacquered wood - Level 0**  
Legno laccato - Fascia 0

**G C** **C01** **RAL OPEN**

**Lacquered wood on request - Level 1**  
Legno laccato su richiesta - Fascia 1

## B Melamine finishes

Malaminici

**G C** **B00** LR 14A Y4

**Melamine finishes - Level 0**  
Malaminici - Fascia 0

**G C** **B01** 10T 3K 11F

**Melamine finishes - Level 1**  
Malaminici - Fascia 1

**G C** **B02** 11J 11Y 11G 11H 11L CK 11M 11N 11P 11Q 11R

**Melamine finishes - Level 2**  
Malaminici - Fascia 2

**G C** **B03** H1

**Melamine finishes - Level 3**  
Malaminici - Fascia 3

**G C** **B04** **RAL OPEN**

**Melamine finishes - Level 4**  
Malaminici - Fascia 4



\* Stains compatible with categories A00 and C00.  
\* Tinte abbinabili alle categorie A00 e C00.

## K Laminates

Laminati

**G C** **K00** LR 14A Y4 11J 11Y 10T 3K 11F

**Laminates - Fascia 0**  
Laminati - Level 0

**G C** **K01** 11H 11L CK 11Q 11R H1

**Laminates - Fascia 1**  
Laminati - Level 1

**G C** **K02** **RAL OPEN**

**Laminates - Fascia 2**  
Laminati - Level 2

\*\* OPEN - Different finishes are also available, upon request. For a minimum order quantity - price quoted upon request.  
Sono disponibili finiture diverse, da noi fornite su richiesta, per quantitativi d'ordine minimo - prezzo su richiesta.

## E Glass / Mirrors

Vetri / Specchi

**G C** **E00** Y1

**Transparent tempered glass**  
Vetro temprato trasparente

**G C** **E01** Y2

**Satin tempered glass**  
Vetro temprato satinato

**G C** **E02** Y13

**Extraclear glass**  
Vetro extra chiaro

**G C** **F00** K0

**Transparent acrylic**  
Acrilico trasparente

**G C** **F01** K5

**Opal frosted acrylic**  
Acrilico opale

**G C** **E03** Y3

**Silver mirror**  
Specchio argento

**G C** **E04** Y11 Y12

**Special mirrors**  
Specchi spaciali

**G C** **F02** **RAL OPEN**

**Colored acrylic**  
Acrilico colorato

## J Back-painted glass

Vetri retroverniciati

**G C** **J00** O6Z O3T

**Back-painted glass - Level 0**  
Vetri retroverniciati - Fascia 0

**G C** **J02** **RAL OPEN**

**Back-painted glass on request - Level 2**  
Vetri retroverniciati su richiesta - Fascia 2

**G C** **J01** 13P O4M OCB O7J 10Q O6P OT9 OP1 OFF 10R OV3 OJM

**Back-painted glass - Level 1**  
Vetri retroverniciati - Fascia 1

## G Aluminium

Alluminio

**G C** **G00** AH

**Oxi silver anodised aluminium**  
Alluminio anodizzato oxi argento

## P Chrome plated metal

Metalli cromati

**G C** **CRO** CRO

**Chrome plated metal**  
Metalli cromati

## H Multi layered-laminates

Stratificati

**G C** **H00** J2 J1

**Multi-layered laminates**  
Stratificato

## I Solid surface

Solid surface

**G C** **I00** LE

**Solid surface - Level 0**  
Solid surface - Fascia 0

**G C** **I02** **RAL OPEN**

**Solid surface - Level 2**  
Solid surface - Fascia 2

**G C** **I01** SS01 SS02 SS03 SS04 SS05

**Solid surface - Level 1**  
Solid surface - Fascia 1

SS06 SS07

\* Colours compatible with categories A00 and C00.  
\* Colori abbinabili alle categorie A00 e C00.

## N Textiles

Tessuti

**G C** **N00** PA PG PN

**Clothes**  
Panni

**N01** N01 N03 N04 N05 N06 N07 N08 N09 N10 N11 N12 N13 N14 N15

**Ecoleather**  
Ecopelle

N17 N18 N19 N20 N16

**N02** N21 N22 N23 N24 N25 N26 N27 N28 N29 N30 N31 N32

**Fabrics and velvets**  
Tessuti e velluti

**N03** **RAL OPEN** **PRINTED**

**Various fabrics. Customised patterns are also available, upon request**  
Tessuti vari a scelta o stampati su richiesta



## Z Various items whose colours or materials are fixed.

Articoli senza varianti di colore o materiale.

\*\* OPEN - Different finishes are also available, upon request. For a minimum order quantity - price quoted upon request.  
Sono disponibili finiture diverse, da noi fornite su richiesta, per quantitativi d'ordine minimo - prezzo su richiesta.



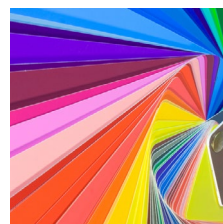
## Solid colours, RAL references

Tinte unita, riferimenti RAL

CAT. A-C-J



Available RAL "Classic", for a minimum order quantity - price quoted upon request.  
RAL "Classic" disponibili, per quantitativi d'ordine minimo - prezzo su richiesta.

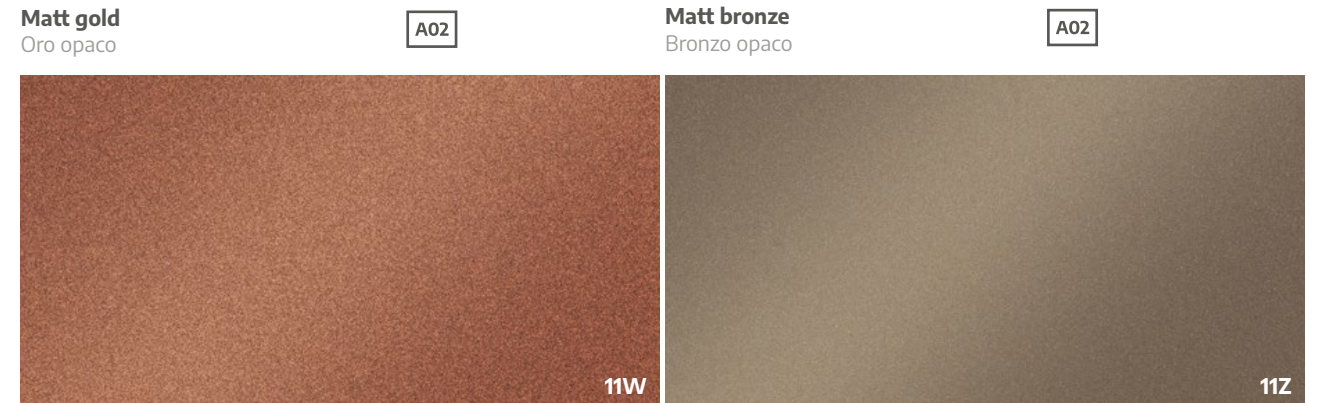
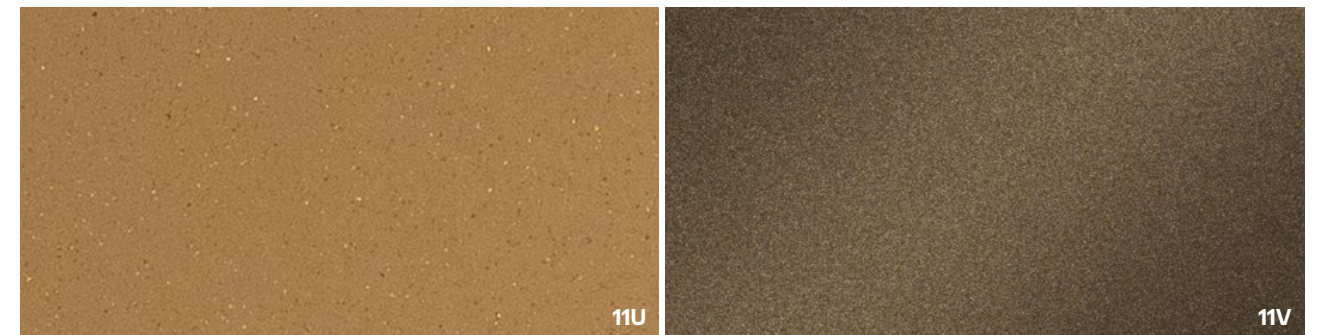


RAL 1001	RAL 2008	RAL 4004	RAL 5011	RAL 6001	RAL 6028	RAL 7011	RAL 7040	RAL 8023
RAL 1002	RAL 2010	RAL 4005	RAL 5012	RAL 6002	RAL 6029	RAL 7012	RAL 7042	RAL 8028
RAL 1003	RAL 2013	RAL 4006	RAL 5013	RAL 6003	RAL 6032	RAL 7013	RAL 7045	RAL 9002
RAL 1011	RAL 3000	RAL 4007	RAL 5014	RAL 6004	RAL 6033	RAL 7015	RAL 7046	RAL 9004
RAL 1013	RAL 3001	RAL 4009	RAL 5015	RAL 6005	RAL 6034	RAL 7016	RAL 7047	RAL 9007
RAL 1014	RAL 3002	RAL 4010	RAL 5017	RAL 6007	RAL 6007	RAL 7021	RAL 7048	RAL 9010
RAL 1015	RAL 3003	RAL 4012	RAL 5018	RAL 6009	RAL 7001	RAL 7022	RAL 8003	RAL 9011
RAL 1018	RAL 3004	RAL 5003	RAL 5020	RAL 6012	RAL 7002	RAL 7024	RAL 8004	RAL 9016
RAL 1021	RAL 3007	RAL 5004	RAL 5021	RAL 6016	RAL 7003	RAL 7030	RAL 8011	RAL 9017
RAL 1023	RAL 3009	RAL 5005	RAL 5022	RAL 6017	RAL 7004	RAL 7031	RAL 8012	RAL 9018
RAL 1032	RAL 3015	RAL 5007	RAL 5023	RAL 6018	RAL 7005	RAL 7032	RAL 8015	RAL 9022
RAL 1034	RAL 3020	RAL 5008	RAL 5024	RAL 6019	RAL 7006	RAL 7035	RAL 8016	RAL 9023
RAL 1035	RAL 4001	RAL 5009	RAL 5025	RAL 6021	RAL 7009	RAL 7037	RAL 8017	
RAL 2004	RAL 4003	RAL 5010	RAL 5026	RAL 6027	RAL 7010	RAL 7038	RAL 8022	

## Metallic and special colours, paint coatings

Tinte metallo e colori speciali, verniciature

CAT. A

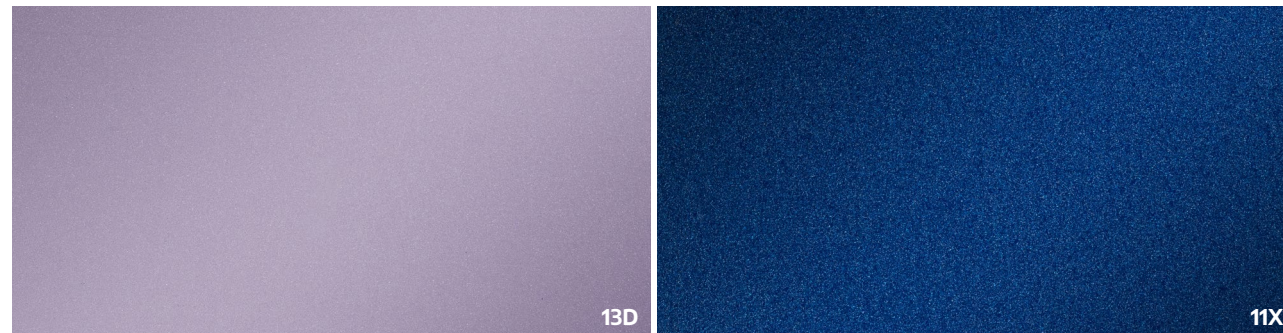




## Metallic and special colours, paint coatings

Tinte metallo e colori speciali, verniciature

CAT. A

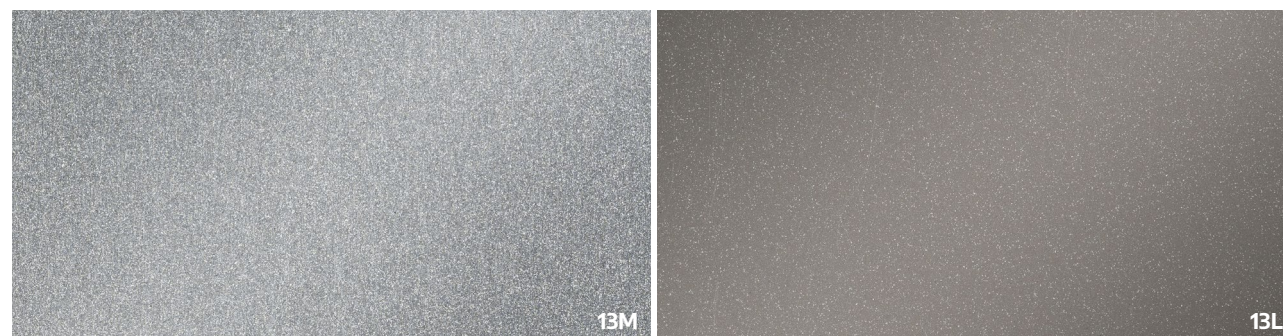


**Matt Purple, RAL 4012**  
Viola, RAL 4012, opaco

A02

**Matt Blue, RAL 5026**  
Blu, RAL 5026, opaco

A02

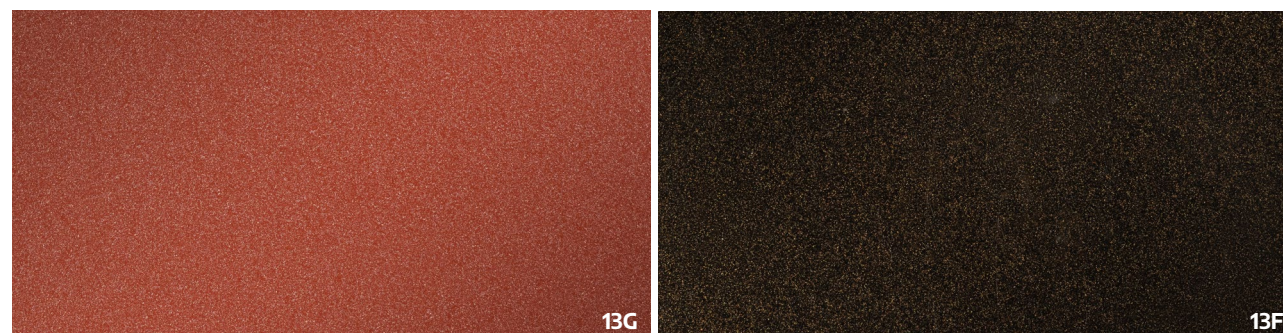


**Gloss Grey**  
Grigio lucido

A02

**Gloss Grey, RAL 9007**  
Grigio, RAL 9007, lucido

A02

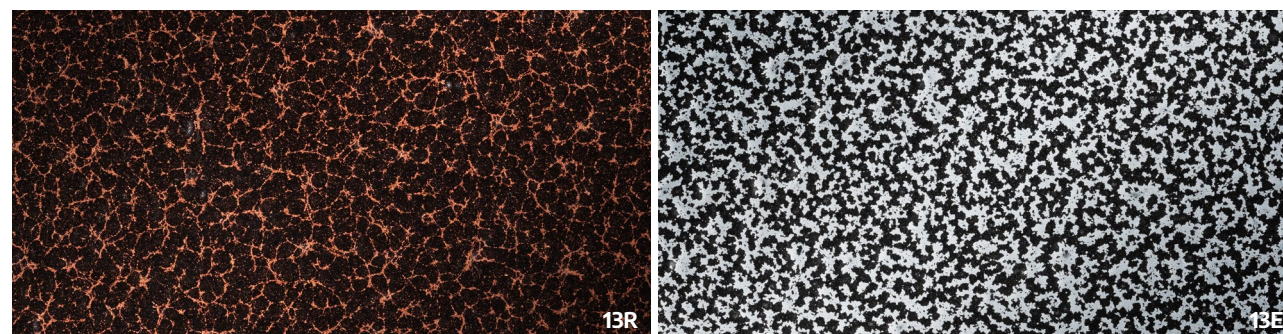


**Matt Brown, RAL 8029**  
Marrone, RAL 8029, opaco

A02

**Dark Bronze, gloss**  
Bronzo scuro lucido

A02



**Gloss copper black, orange peel**  
Nero-Rame lucido bugnato

A02

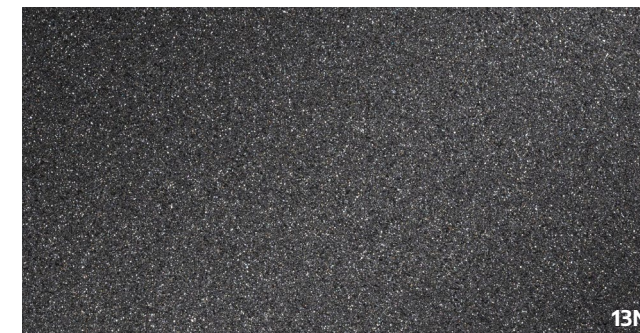
**Gloss black, orange peel**  
Nero lucido bugnato

A02

## Metallic and special colours, paint coatings

Tinte metallo e colori speciali, verniciature

CAT. A



**Matt Black, wrinkled**  
Nero opaco raggrinzito

A02



# Wood essences & Stone colours

Essenze legno & Pietra

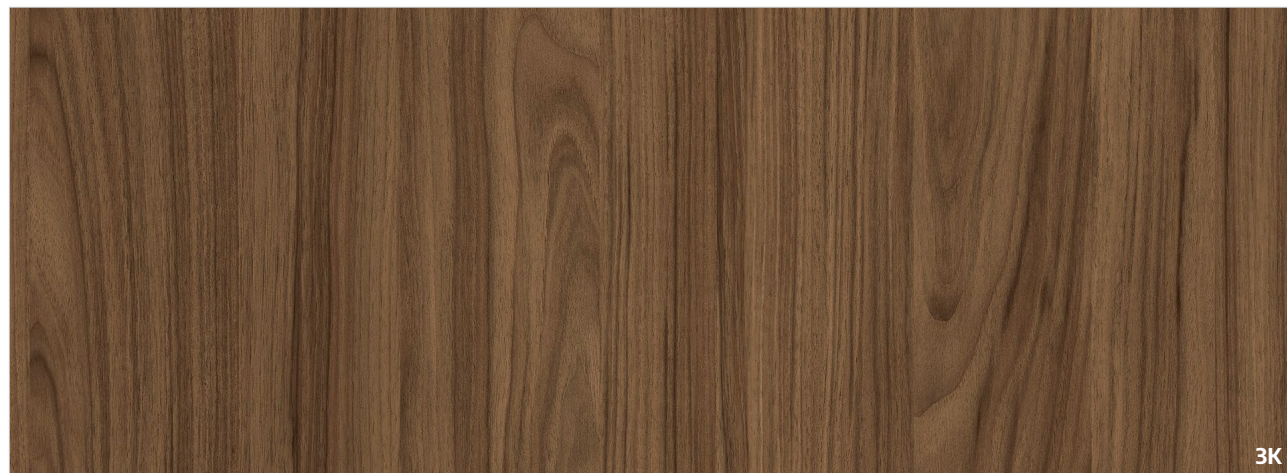
CAT. B-K



10T

**Nocciolo**  
Nocciolo

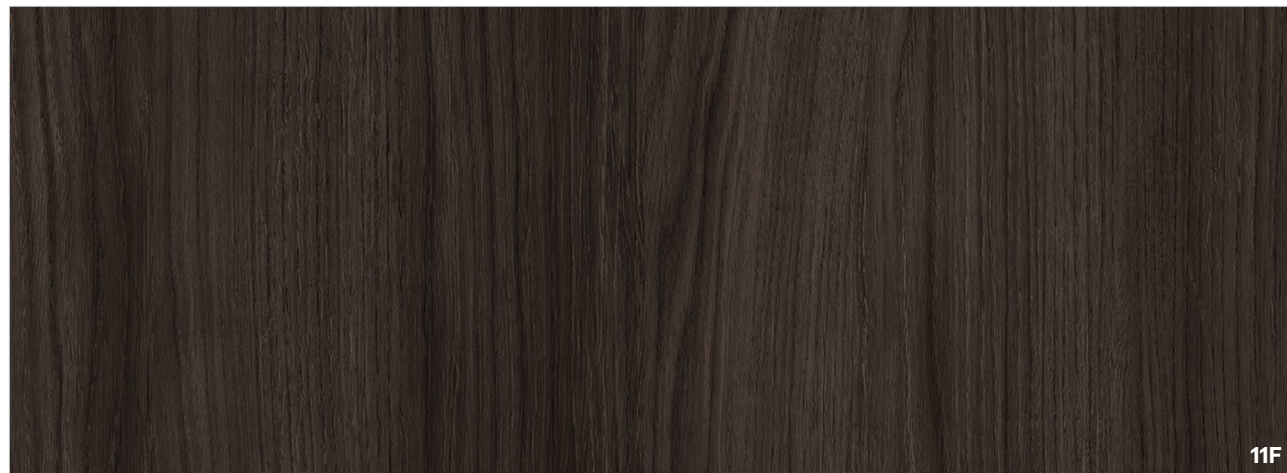
B01 K00



3K

**Noce Andalusia**  
Noce Andalusia

B01 K00



11F

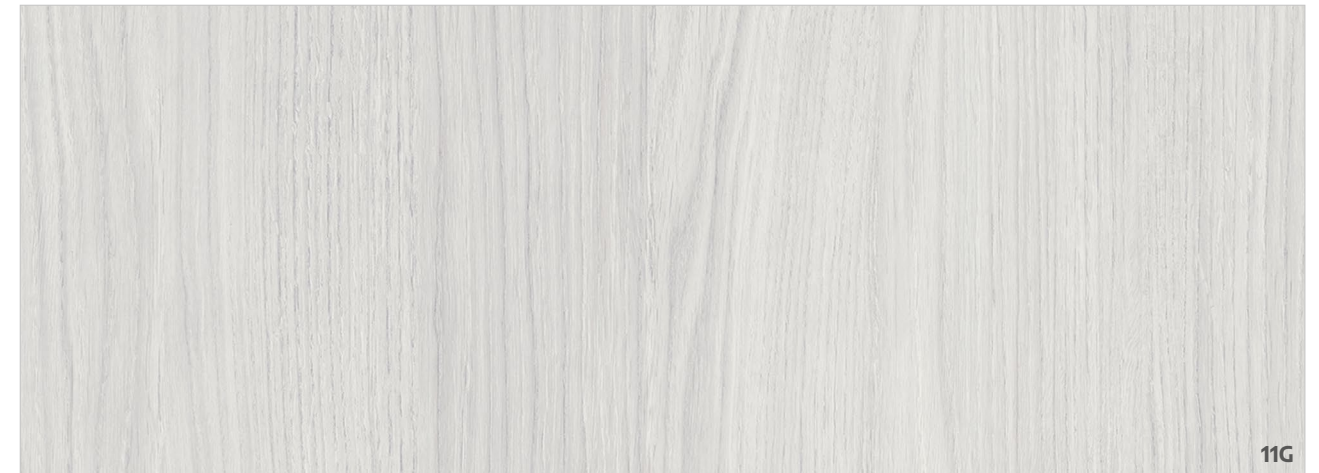
**Tropea Eiche [dark]**  
Tropea Eiche [scuro]

B01 K00

# Wood essences & Stone colours

Essenze legno & Pietra

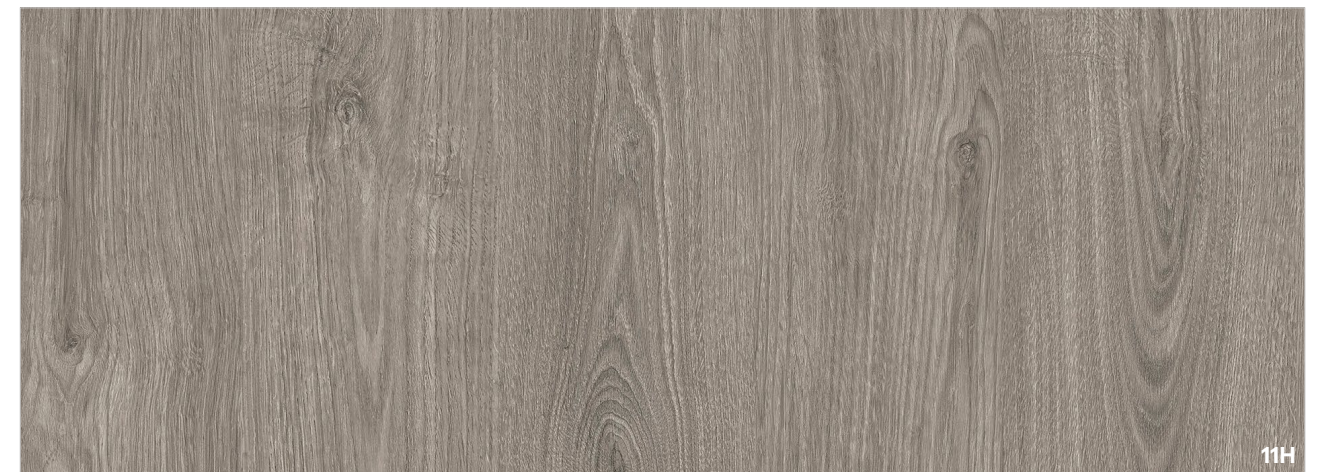
CAT. B-K



11G

**Tropea Eiche [light]**  
Tropea Eiche [chiaro]

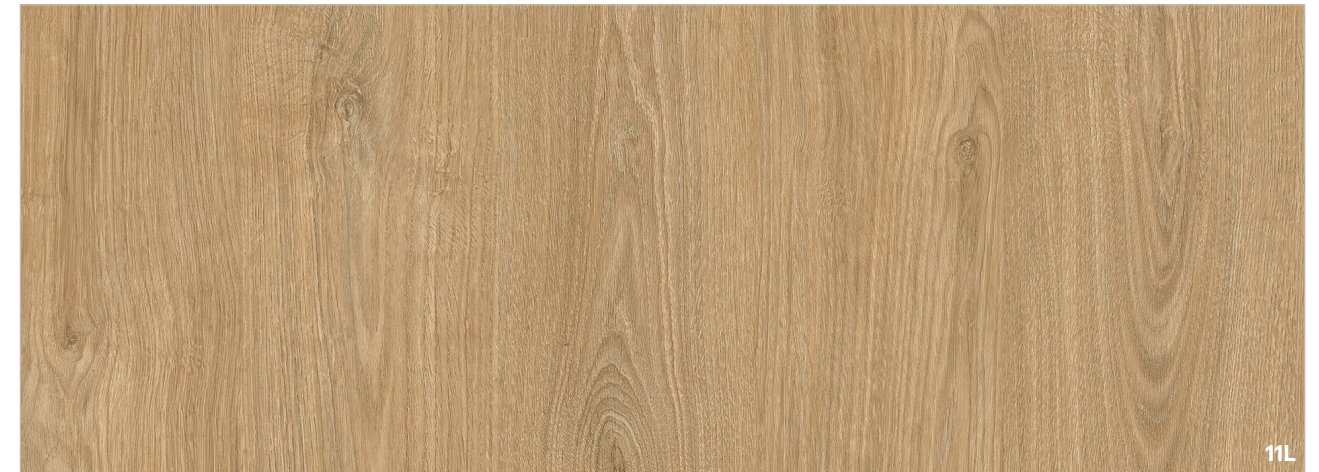
B02



11H

**Rovere Dolomite [grey]**  
Rovere Dolomite [grigio]

B02 K01



11L

**Rovere Dolomite [cream]**  
Rovere Dolomite [crema]

B02 K01



# Wood essences & Stone colours

Essenze legno & Pietra

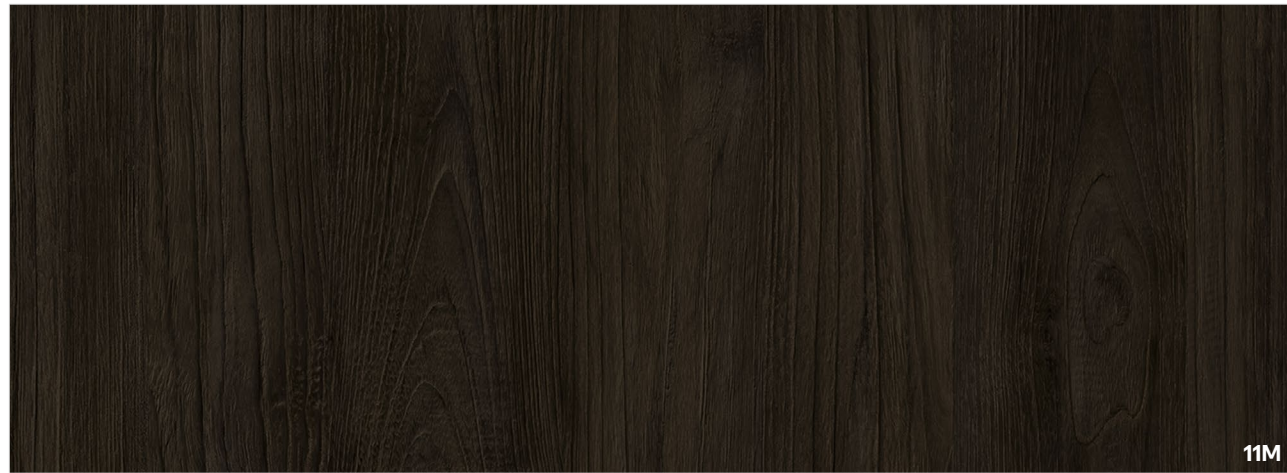
CAT. B-K



CK

**Montale Apricale**  
Montale Apricale

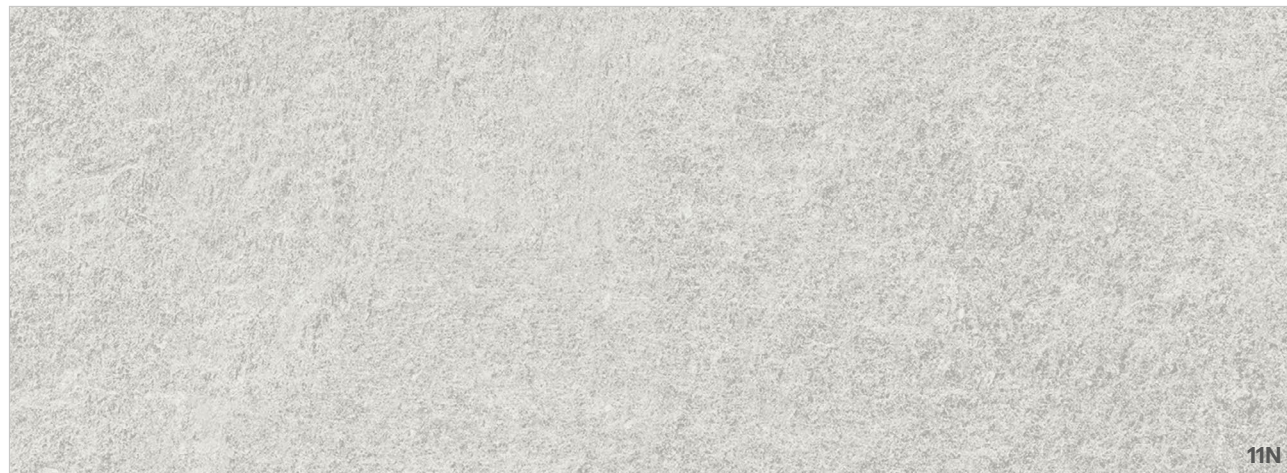
B02 K01



11M

**Burma Teak**  
Burma Teak

B02



11N

**Gritstone**  
Gritstone

B02

# Wood essences & Stone colours

Essenze legno & Pietra

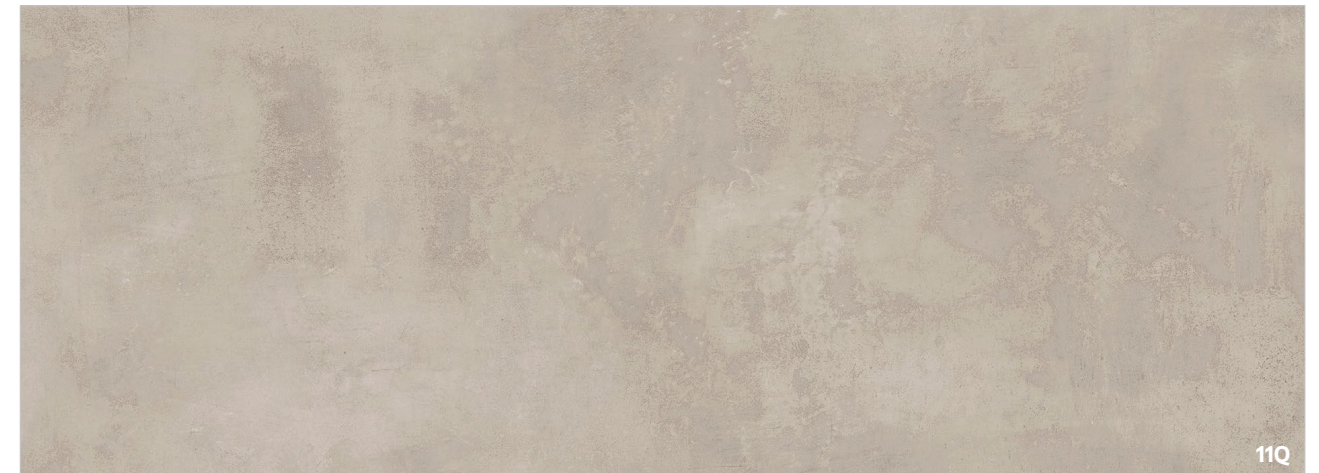
CAT. B-K



11P

**Raw Steel**  
Raw Steel

B02



11Q

**Factory [cream]**  
Factory [crema]

B02 K01



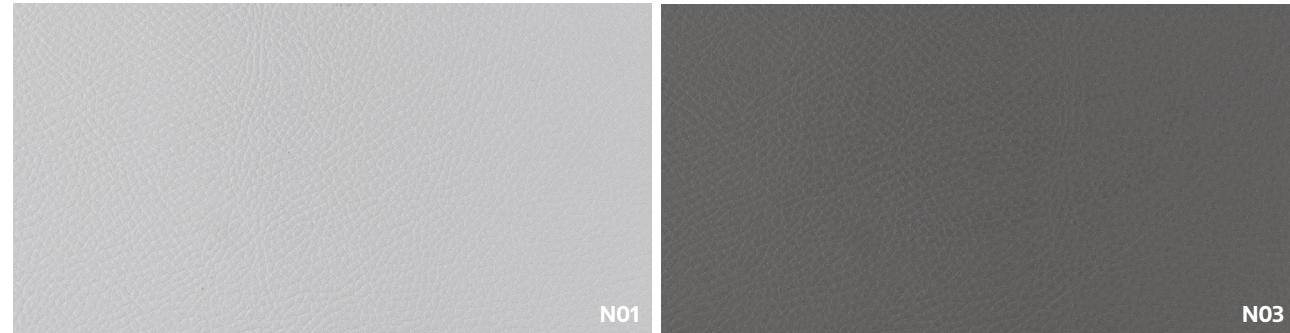
11R

**Factory [grey]**  
Factory [grigio]

B02 K01

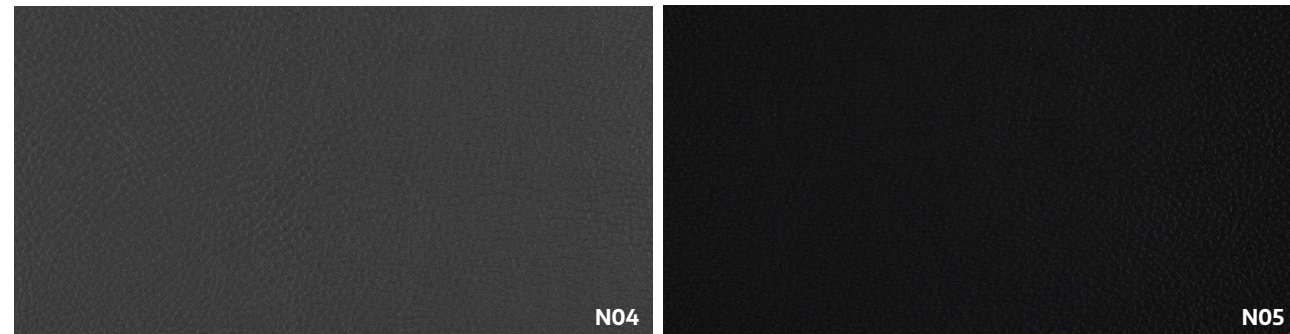


# Ecoleather Ecopelle CAT. N



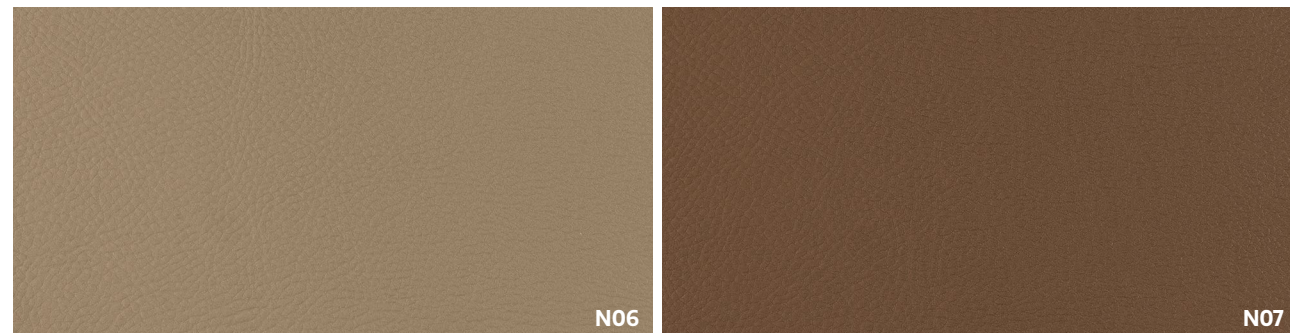
**Inca - Light grey**  
Inca - Grigio luce N01

**Inca - Dusty grey**  
Inca - Grigio polvere N01



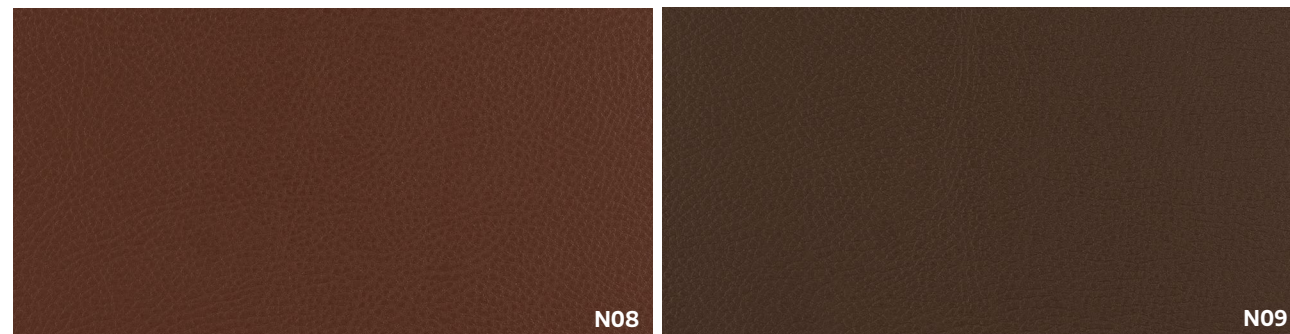
**Inca - Umbra grey**  
Inca - Grigio ombra N01

**Inca - Black grey**  
Inca - Grigio nerastro N01



**Inca - Beige**  
Inca - Beige N01

**Inca - Olive brown**  
Inca - Marrone oliva N01



**Inca - Terra brown**  
Inca - Marrone terra N01

**Inca - Signal brown**  
Inca - Marrone segnale N01

# Ecoleather Ecopelle CAT. N



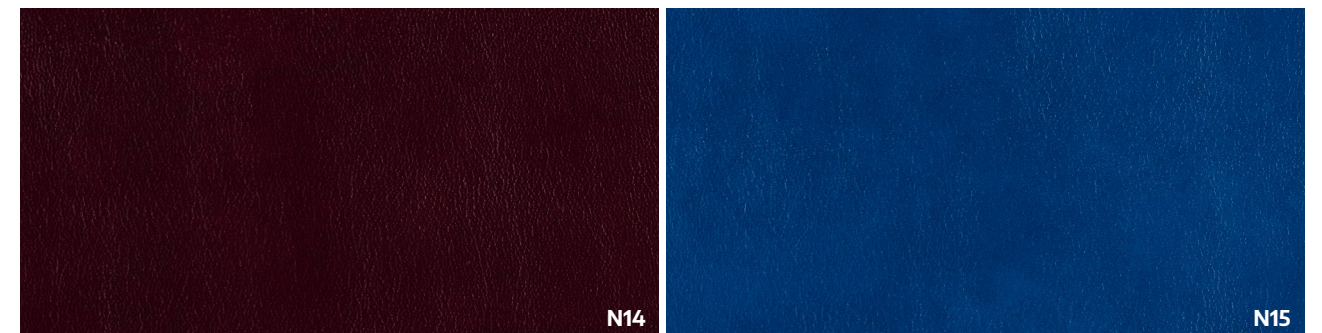
**Moka - Pastel yellow**  
Moka - Giallo pastello N01

**Moka - Pearl pink**  
Moka - Rosa perlato N01



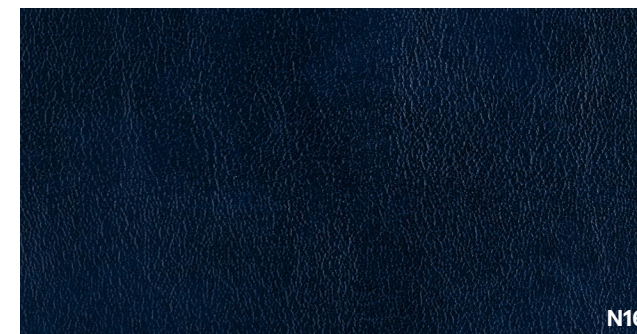
**Moka - Fern green**  
Moka - Verde felce N01

**Moka - Wine red**  
Moka - Rosso vino N01



**Moka - Black red**  
Moka - Rosso nerastro N01

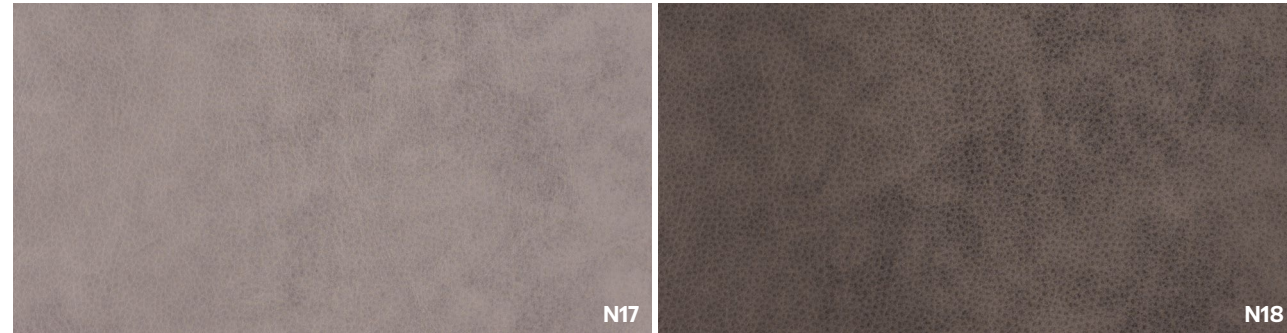
**Moka - Gentian blue**  
Moka - Blu genziana N01



**Moka - Steel blue**  
Moka - Blu acciaio N01

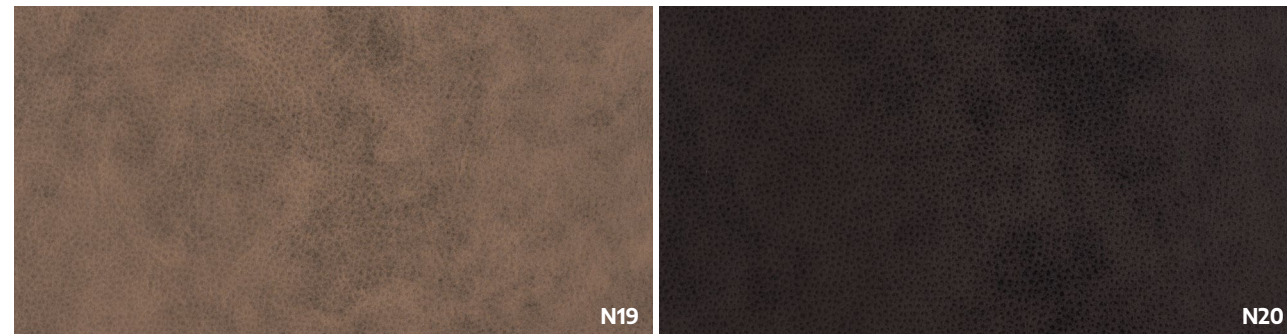


# Ecoleather Ecopelle CAT. N



**Baster - Platinum grey**  
Baster - Grigio platino N01

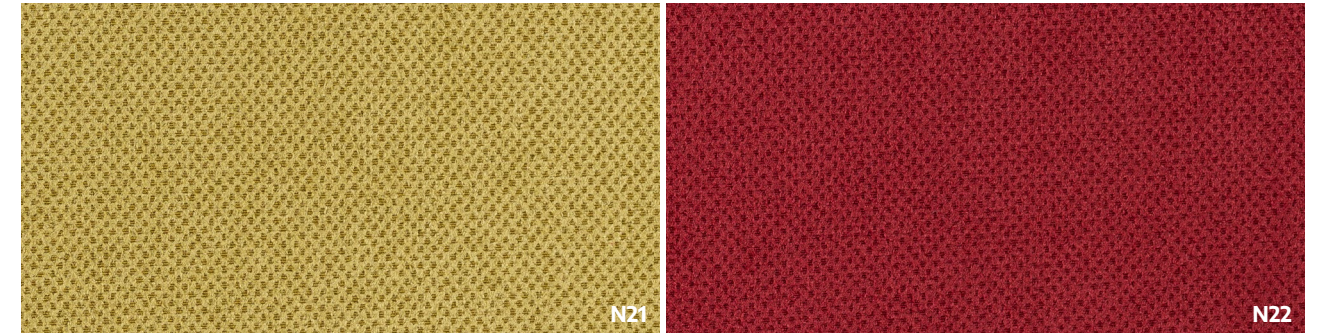
**Baster - Quartz grey**  
Baster - Grigio quarzo N01



**Baster - Beige grey**  
Baster - Grigio beige N01

**Baster - Grey brown**  
Baster - Marrone grigiastro N01

# Fabrics and velvets Tessuti e velluti CAT. N



**Viola - May green**  
Viola - Verde maggio N02

**Viola - Orient red**  
Viola - Rosso oriente N02



**Viola - Sapphire blue**  
Viola - Blu zaffiro N02

**Viola - Beige**  
Viola - Beige N02



**Vicky - Olive yellow**  
Vicky - Giallo olivastro N02

**Vicky - Claret violet**  
Vicky - Viola bordeaux N02



**Vicky - Azure blue**  
Vicky - Blu azzurro N02

**Vicky - Traffic grey**  
Vicky - Grigio traffico N02



## Fabric and velvet

### Tessuto e velluto

CAT. N



**Tecnofibra - Pine green**  
Tecnofibra - Verde pino

N02

**Tecnofibra - Wine red**  
Tecnofibra - Rosso vino

N02



**Tecnofibra - Beige grey**  
Tecnofibra - Grigio beige

N02

**Tecnofibra - Sapphire blue**  
Tecnofibra - Blu zaffiro

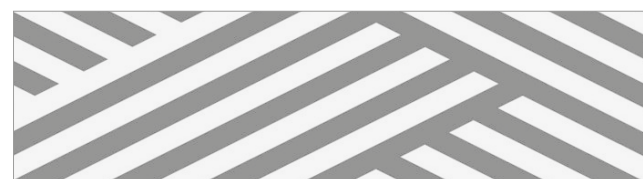
N02



**“OPEN”** - Different fabric swatches are also available, upon request. For a minimum order quantity - price quoted upon request.

Sono disponibili tirelle alternative da noi fornite su richiesta, per ogni tipo di tessuto. Per quantitativi d'ordine minimo - prezzo su richiesta.

N03



**“PRINTED”** - Customized digital printing on any color of N01 category. For a minimum order quantity - price quoted upon request.

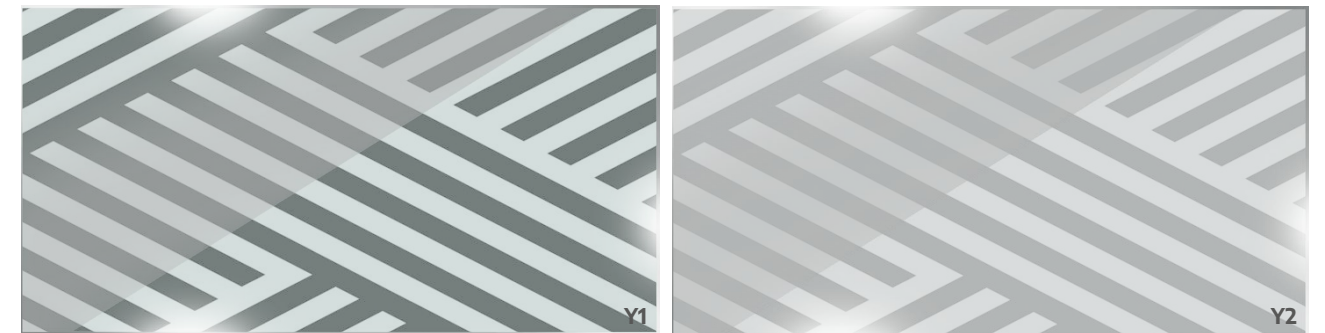
Stampa digitale su un colore a scelta della categoria N01. Per quantitativi d'ordine minimo - prezzo su richiesta.

N03

## Glass and mirrors

### Vetri e specchi

CAT. E



**Transparent tempered glass**  
Vetro temprato trasparente

E00

**Satin tempered glass**  
Vetro temprato satinato

E01



**Extraclear glass**  
Vetro extra chiaro

E02

**Silver mirror**  
Specchio argento

E03



**Bronze mirror**  
Specchio bronzo

E04

**Fumé mirror**  
Specchio fumé

E04



**Transparent acrylic**  
Acrilico trasparente

F00

**Opal frosted acrylic**  
Acrilico opale

F01



## TERMS & CONDITIONS

Every category or material included into this catalogue (i.e. category *A\_Epoxy paints*) is divided into sub-categories (i.e. *A00/A01/A02/A04*). The materials and/or finishes belonging to the same sub-category share the same price and are also subject to the same maximum preparation time.

For "preparation time", it is meant the time necessary to manufacture and have ready for delivery the goods ordered by a client.

The table to the right indicates exactly, for each sub-category, the maximum preparation time, whose length is dependent from the supply chain and that can be reduced, any time the raw materials will be supplied to us quickly than expected: in any case such preparation time is indicative and not peremptory.

The Italian public and customary holidays can extend the delivery time.

With the aim to improve the product, Gibam has the right to amend at his own discretion and at any time the materials, the finishes and the colours included into this catalogue, even without immediate notice.

## TERMINI & CONDIZIONI

Ogni categoria di materiale di questo catalogo (ad esempio categoria *A\_Verniciatura a Polveri Epossidiche*) è suddivisa in sottocategorie (ad esempio *A00/A01/A02/A04*). I materiali e/o finiture che appartengono alla stessa sottocategoria sono venduti allo stesso prezzo ed i prodotti realizzati con essi sono soggetti agli stessi tempi di approntamento massimi previsti.

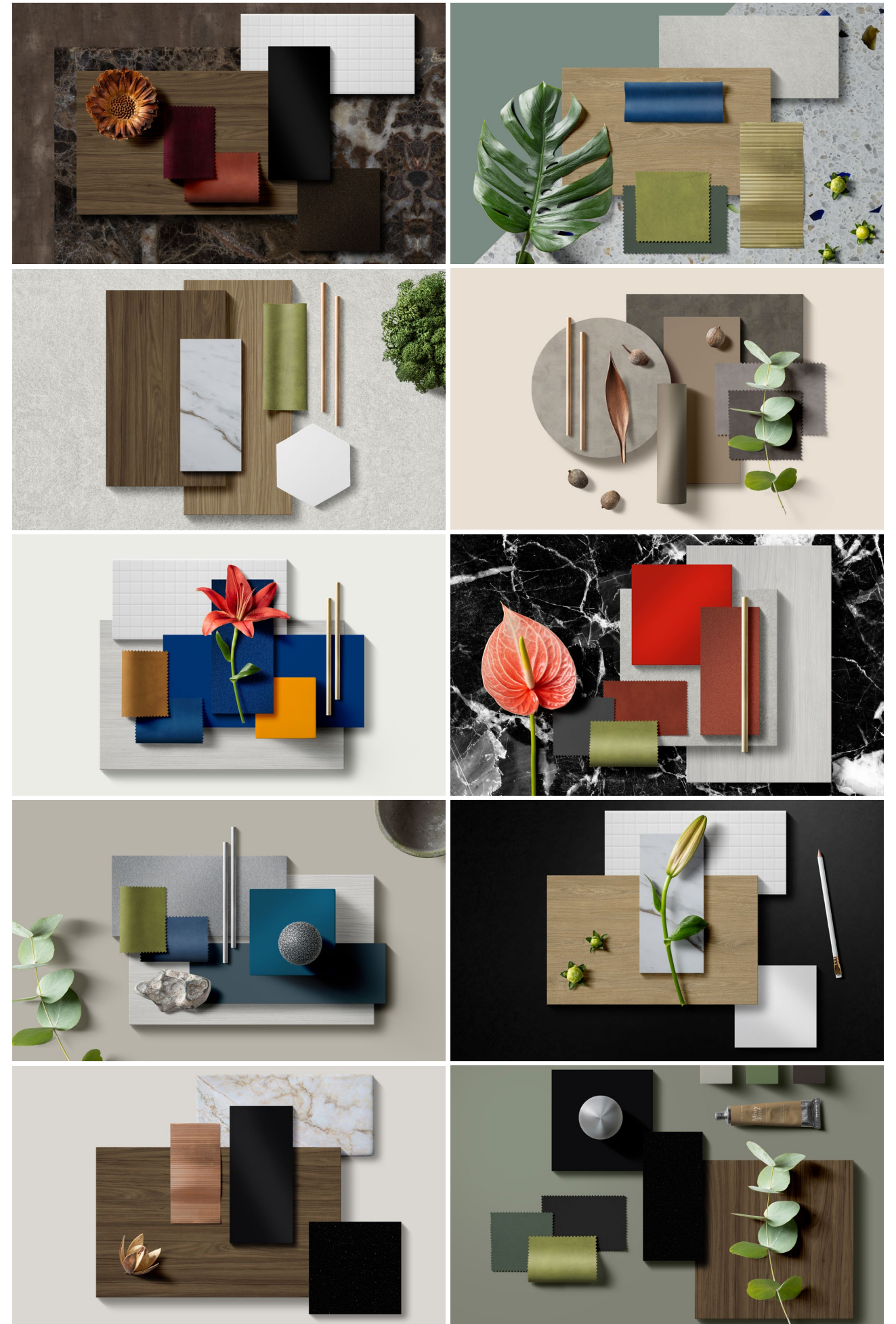
Per "tempo di approntamento", intendiamo qui il tempo necessario a produrre ed avere pronta per la spedizione la merce ordinata dal cliente.

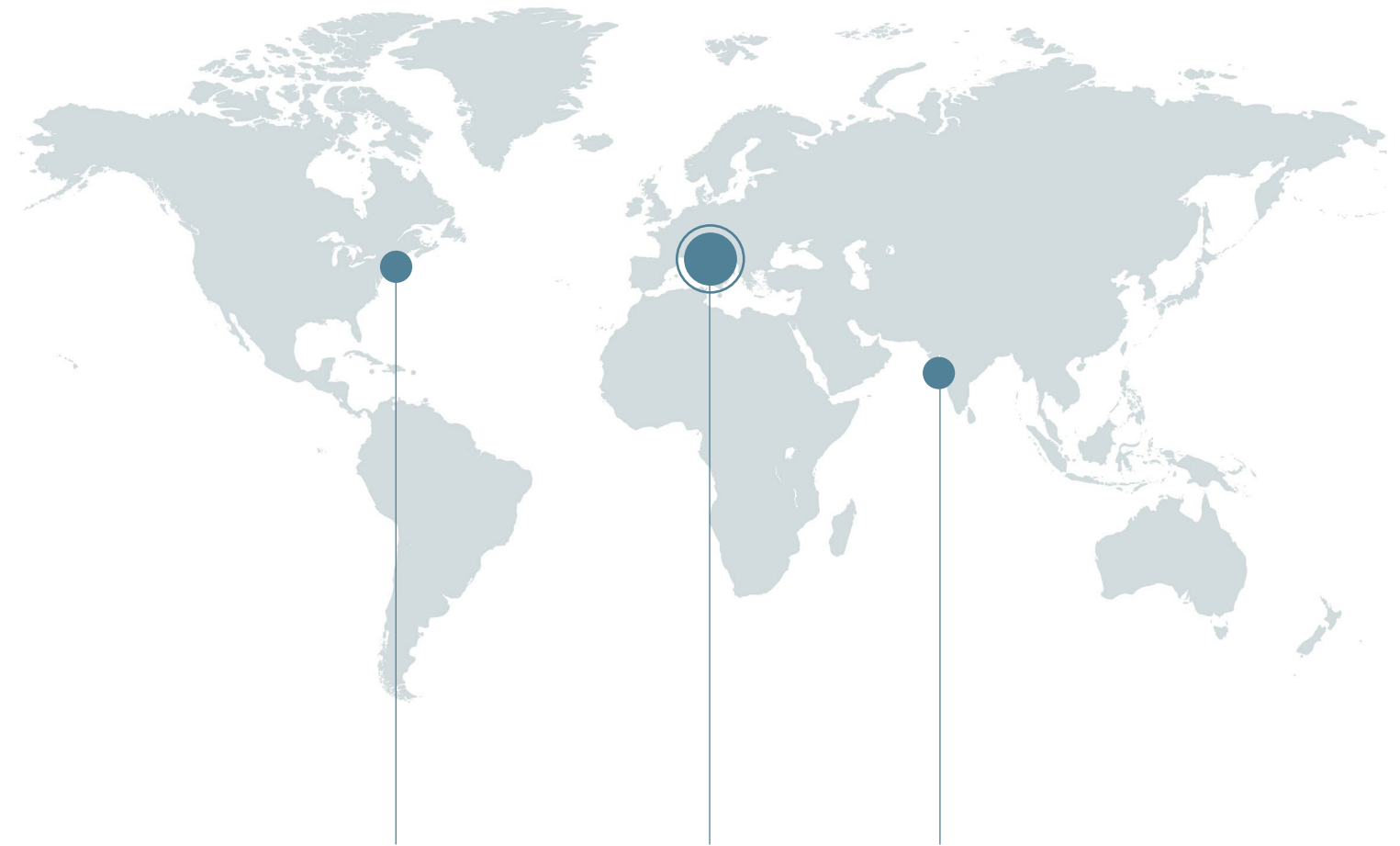
La tabella riportata a destra identifica appunto per ogni sottocategoria i tempi di approntamento massimi previsti, che sono conseguenti a quanto imposto dalla catena di fornitura e che sono suscettibili di riduzione, ogniqualvolta sarà stato possibile ottenere le relative materie prime più rapidamente: sono comunque tempi indicativi e non tassativi.

Le festività del calendario italiano possono allungare il tempo di approntamento quando questo le include.

Gibam si riserva il diritto di variare a propria discrezione ed in qualsiasi momento, al fine di migliorare il prodotto, i materiali, le finiture e i colori qui rappresentati, anche senza darne preavviso tempestivo.

<b>A</b>	<b>Epoxy-paint coatings</b> Verniciatura a polveri epossidiche		
	A00	A01	5 WEEKS
	A02	A04	8 WEEKS
<b>C</b>	<b>Polyurethane Paints</b> Verniciature poliuretatiche		
	C00		5 WEEKS
	C01		8 WEEKS
<b>B</b>	<b>Melamine finishes</b> Malaminici		
	B00	B01	5 WEEKS
	B02		8 WEEKS
	B03	B04	12 WEEKS
<b>K</b>	<b>Laminates</b> Laminati		
	K00	K01	5 WEEKS *H1 laminate is delivered in 8 WEEKS
	K02		8 WEEKS
<b>E</b>	<b>Glass / Mirrors</b> Vetri / Specchi		
	E00	E01	E02
	E03		5 WEEKS
	E04		8 WEEKS
<b>F</b>	<b>Acrylics</b> Acrilici		
	F00	F01	5 WEEKS
	F02		8 WEEKS
<b>J</b>	<b>Back-painted glass</b> Vetri retroverniciati		
	J00		5 WEEKS
	J01	J02	8 WEEKS
<b>G</b>	<b>Aluminium</b> Alluminio		
	G00		5 WEEKS
<b>P</b>	<b>Chrome plated metal</b> Metalli cromati		
	CRO		5 WEEKS
<b>H</b>	<b>Multi layered-laminates</b> Stratificati		
	H00		8 WEEKS
<b>I</b>	<b>Solid surface</b> Solid surface		
	I00		5 WEEKS
	I02	I01	8 WEEKS
<b>N</b>	<b>Tessuti</b> Textiles		
	N00	N01	N02
	N03		5 WEEKS
			8 WEEKS





**Gibam Usa Inc**  
BROOKLIN, USA

[www.gibam-usa.com](http://www.gibam-usa.com)

Headquarter and sales office  
for USA, Central  
and South America.

**Gibam Shops S.p.a.**  
FANO, ITALY

[www.gibam.it](http://www.gibam.it)

Headquarter and sales office  
for European Union  
and Middle East Countries.  
Factory for European Union,  
Middle East Countries,  
USA, Central  
and South America.

**Surani Gibam Spa Pvt Ltd**  
MUMBAI, INDIA

[www.suranigibamspa.in](http://www.suranigibamspa.in)

Headquarter, sales office  
and factory  
for India, Bangladesh  
and North Africa.

---

OUR OFFICES IN THE WORLD





**GIBAM SHOPS S.p.a.**

Via VIII strada, 13  
61032 Bellocchi di Fano (PU)  
ITALY  
Phone: +39 0721 85991

**www.gibam.it**

info@gibam.it

**www.gibam-usa.com**

info@gibam-usa.com

© **GIBAM SHOPS S.p.a.**

March 2021

This brochure cannot be partially or totally reproduced unless Gibam Shops S.p.a. has granted permission to do so.

